

ALL PATHS LEAD TO...

ROME™



#### EFFICIENT

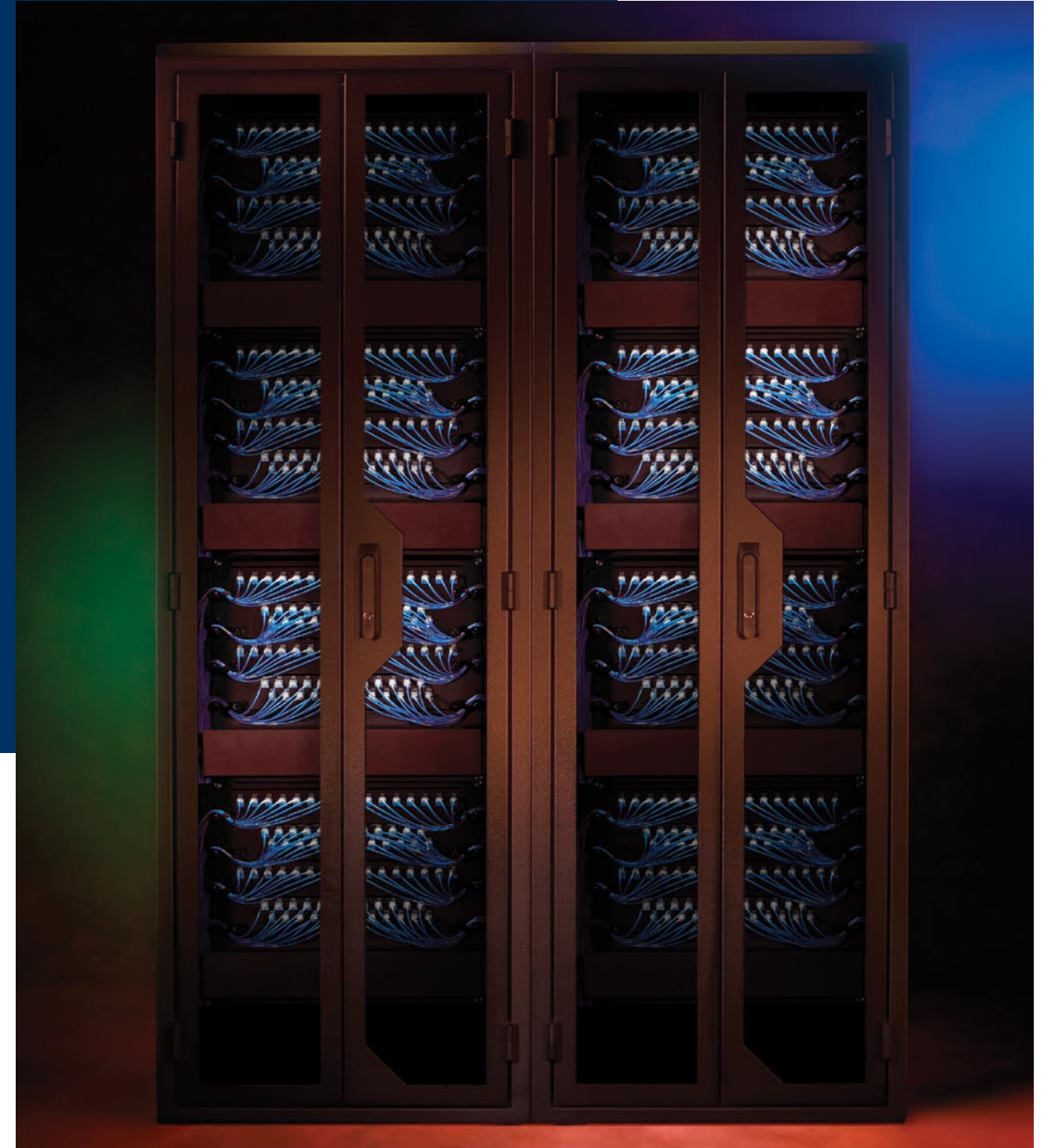
ROME™ provides efficiency and ease of management in the structured cable plant. Each ezBLADE™ frame accommodates four (4) modular panel inserts that offer 16, 24, 32 and 48-port LC Duplex adapter options. These adapter counts match the blade port counts in leading OEM storage and director-class switch devices and make for an intuitive cross-connect environment. At four frames per side, our design allows for up to 1,536 ports in a single cabinet, when mounted on two sets of opposing mounting rails.

#### INTUITIVE

You determine the equipment and we'll provide an intuitive connectivity solution. By matching one trunk cable per panel insert, data center operations and physical planning personnel can create a main cross-connect system with a 1:1:1 ratio of equipment blade, trunk cable, and patch panel. When it comes to documenting, locating, and trouble-shooting links, this intuitive approach is a real time saver.

#### NEAT

To minimize downtime and run a tight ship, we wanted a system that keeps everything clean. ezLINE™ patch cables are designed on single 2.8mm round duplex cable material with LC Duplex "Uniboot" connector technology. This simple design element reduces the number of discreet cables in the Main-Cross-Connect by 50%. Add a true inside-the-cabinet pathway system, ezPATH™, and now you no longer have to route patch cables under the floor. NEAT!



The logo for CONEXUS, featuring the word "CONEXUS" in a bold, blue, sans-serif font. Above the letter 'X' are three orange circles of varying sizes, arranged in a slight arc.

The logo for CONEXUS, featuring the word "CONEXUS" in a bold, blue, sans-serif font. Above the letter 'X' are three orange circles of varying sizes, arranged in a slight arc.

# ROME™

ROME™ is a comprehensive, end-to-end data center cabling & connectivity product family developed by field-level data center cabling professionals for the Tier 3 and Tier 4 enterprise data center.



### DOUBLE YOUR CAPACITY

Most data center cabling solutions are limited to using one side of the cabinet, because there is no way to access cabling between opposing patch panels if they are mounted to the cabinet rails in a fixed position. ROME™ is designed with a front-access, hinging frame that eliminates this limitation and maximizes available cabinet space.

When assembled into a three dimensional Main-Cross-Connect, the system provides nearly infinite scalability with ezPATH™ Pathway connecting each ezBLADE™ frame and each linear cabinet row. There isn't another system that scales like ROME™.

The ROME™ product family provides a turn-key solution for efficient network interconnection

### ezBLADE™ Patch Panels



Modular ezBLADE™ Patch Panels are designed to match OEM blade port-counts and make patch management a simple, intuitive process. Users can incorporate up to four, 16-port, 24-port, 32-port, or 48-port blade-modules into a single 7U, hinged, front-access frame. Front access allows for 100% cabinet utilization on both sides of the cabinet, saving valuable data center floor space.



ezBLADE™ Patch Panels rest on the ezCHANNEL™ Pathway when fully rotated forward. This provides front access to trunk connections on the rear side of the panels and allows for panel mounting on both sides of a fiber cabinet or rack.



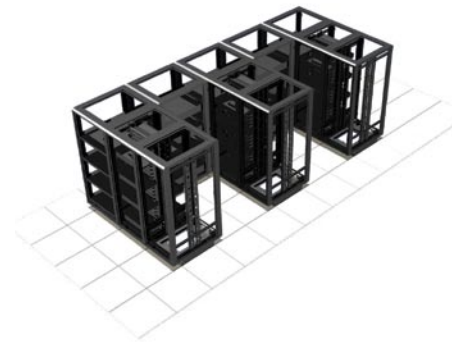
### ezLINE™ Factory Terminated Cable Assemblies

Today, ezLINE™ Factory-Terminated Cable Assemblies are guaranteed to support 10Gb/s data transmission for up to 300 meters. The IEEE 802.3 Higher Speed Study Group (HSSG) has voted to support 100Gb/s as the next speed for Ethernet. ezLINE™ will support 100Gb/s data transmission for up to 100 meters.



### ezPATH™ Inside-the-Cabinet Pathway™

Sometimes, when you think outside the box, you realize that it makes a great deal more sense to stay inside the box. ezPATH™ Pathway is a true, inside-the-cabinet cable routing solution that keeps patch cable management in the Main-Cross-Connect completely above the raised floor. This is THE most practical rack-based cable management solution on the market – a truly innovative design concept – the first of its kind, and sure to be imitated.



### ezFRAME™ Cabinet with Three Dimensional Scalability™

ezFRAME™ Cabinets can be used as stand-alone solutions to Equipment-Cross-Connect or Zone-Cross-Connect applications, but offers 3 dimensional scalability to architect a Main-Cross-Connect solution that is unrestricted from the limitations of the typical linear approach taken by most solution providers. ezFRAME™ also offers a unique ezBASE™ Cabinet Base which eliminates the requirement for custom floor tile cut-outs and, in fact, eliminates the need for any floor tile at all. Users can reclaim floor tiles for use in other areas where specialized cut-outs are required.



### ezBREEZE™ Airflow Control System™

The ezBREEZE™ Airflow Control System™ is our proprietary air-flow barrier/flow-control solution for the data center sub-floor environment. When applicable, we locate the Main-Cross-Connect in an area where there is no active electronic equipment and, therefore, no cooling requirement. A sub-floor air dam or ezBREEZE™ "moat" is constructed around the entire Main-Cross-Connect area so that little to none of the data center's forced air cooling resources are wasted on this passive area. ezBREEZE™ sections can also be installed to purposefully direct airflow from a CRAC Unit to a specific area in the machine room where hot spots may be a problem.